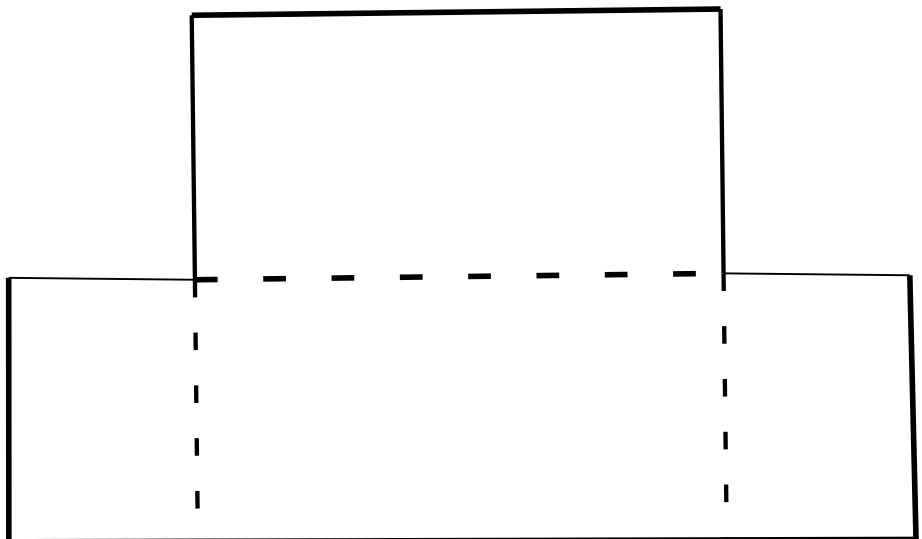
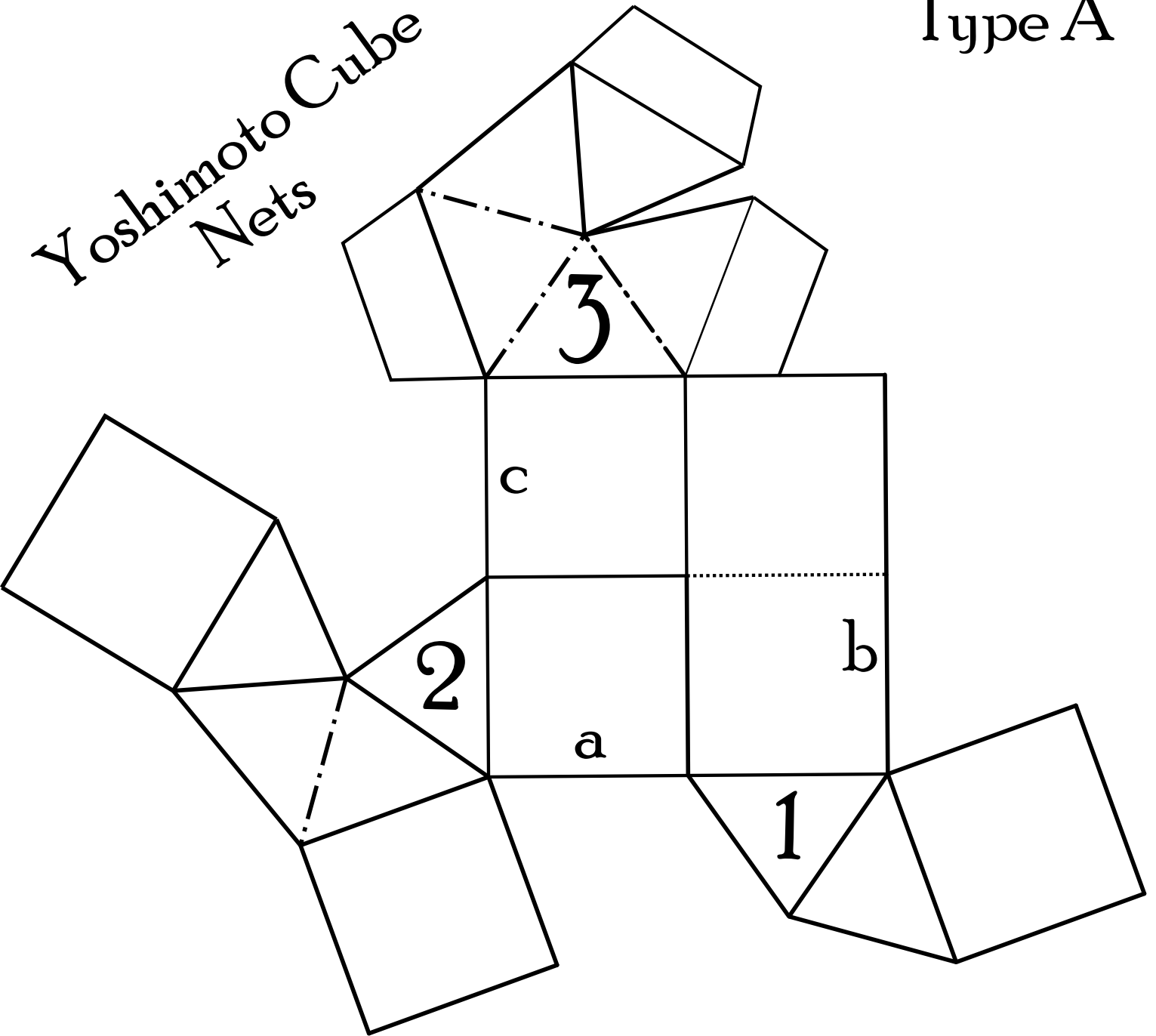
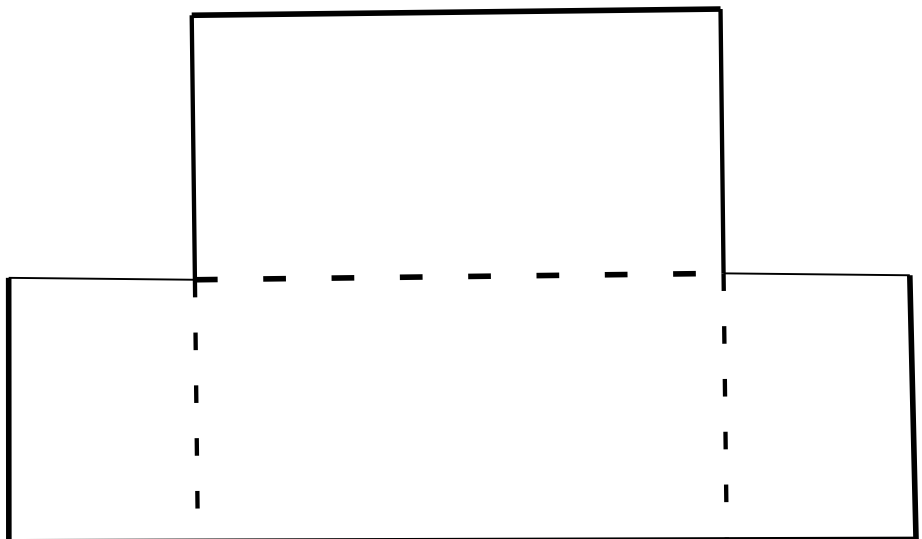
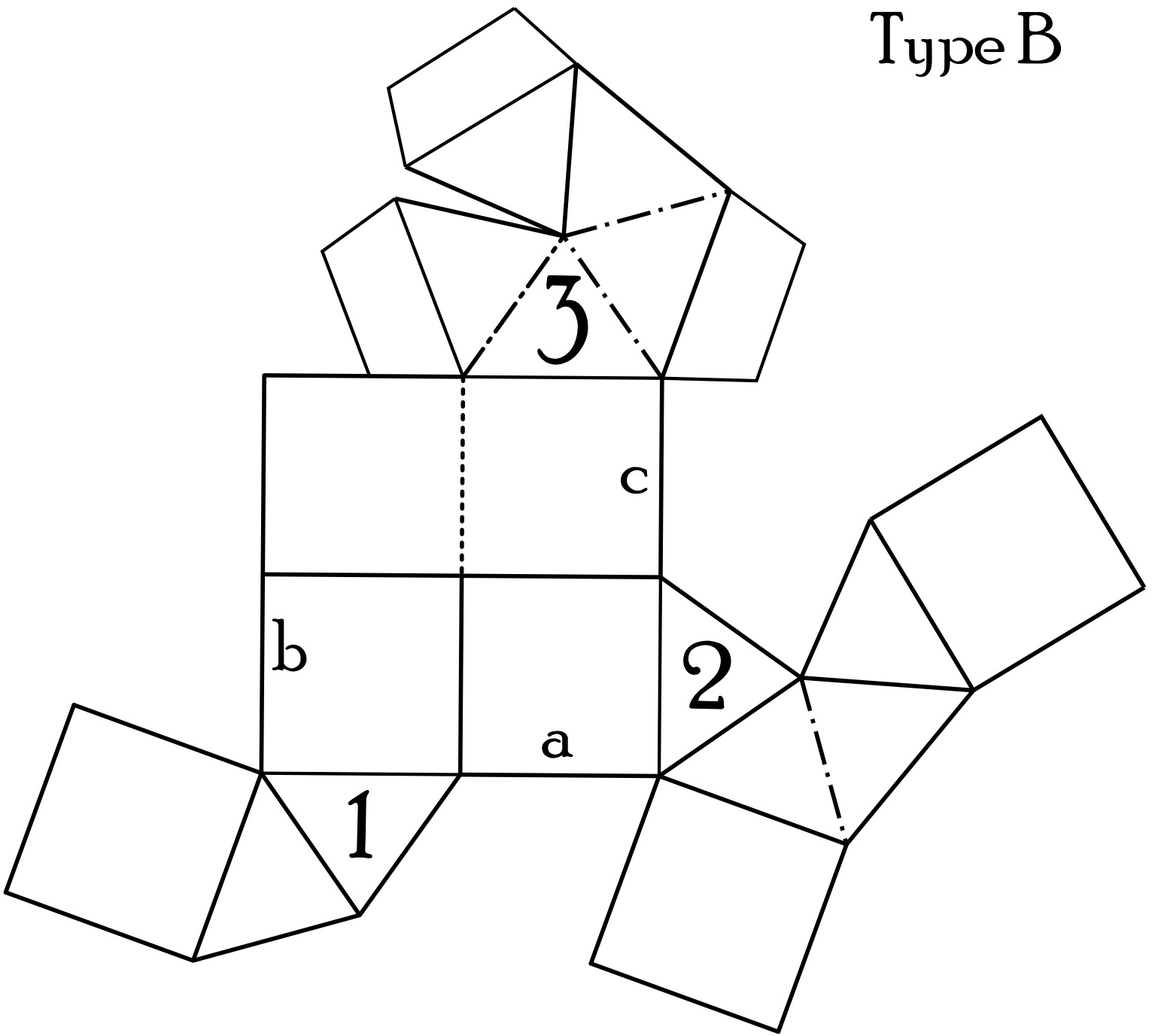


Yoshimoto Cube Nets

Type A



Type B



Half Cube Type & Hinge Placement

A ^c _b c	B ^a _a a	A ^c _b c	B ^b _a b
B ^b _a b	A ^c _c c	B ^b _b b	A ^a _a a

A complete "cube" requires 4 Type A half-cubes, 4 type B half-cubes, and 8 hinges.